



SAILING INSTRUCTIONS

**Dutch championship
for
Flying Dutchman class
And
Open Dutch championship
for
Flying Junior class**

organised by WSV Hoorn
under the auspices of the RNWA
from 6th to 7th May (inclusive) 2023
location: Hoornse Hop, Hoorn

The notation '[NP]' in a rule means that a boat may not protest another boat for breaking that rule. This changes RRS 60.1(a).

1. RULES

- 1.1 The event is governed by the rules as defined in *The Racing Rules of Sailing (RRS)*.
- 1.2 All competitors and support persons must adhere to the corona rules of the Dutch government for the for the rules see <https://www.government.nl/topics/coronavirus-covid-19>.
- 1.3 [DP] Competitors and support persons shall comply with any reasonable request from an event official. Failure to comply may be misconduct. - Reasonable actions by event officials to implement COVID-19 guidance, protocols or legislation, even if they later prove to have been unnecessary, are not improper actions or omissions.

2 CHANGES TO SAILING INSTRUCTIONS

- 2.1 Any change to the sailing instructions will be posted before 09:00 on the day it will take effect, except that any change to the schedule of races will be posted by 20:00 on the day before it will take effect.



3 COMMUNICATIONS WITH COMPETITORS

3.1 The official notice board is located at the outside of the race office.

As a service to the sailors there will be a Whatsapp Group
<https://chat.whatsapp.com/BE0WC7Z7yI0F6HYjn6dUO3>

The intention of the race committee is to copy information to the whatsapp group. Failure to do so, will be no ground for redress.

Register for the Whatsappgroup via <https://chat.whatsapp.com/BE0WC7Z7yI0F6HYjn6dUO3>. "

3.2 The race office is located at [Julianapark 1; 1621 MR Hoorn. +31 229 213 540;](#)
www.wsvh.nl/locatie/


4 [DP] CODE OF CONDUCT

4.1 Competitors and support persons shall comply with reasonable requests from race officials.

4.2 Competitors and support persons shall handle any equipment -or place advertising provided by the organizing authority with care, seamanship, in accordance with any instructions for its use and without interfering with its functionality.

5. SIGNALS MADE ASHORE

5.1 Signals made ashore will be displayed at a mast nearby in the front of the race office.

5.2 When flag AP  is displayed ashore, '1 minute' is replaced with 'not less than 60 minutes' in the race signal AP.

6 SCHEDULE OF RACES

6.1

Date:	Flying Dutchman	Flying Junior
Saturday 6 May	4 races	4 races
Sunday 7 May	4 races	4 races

6.2 One extra race per day may be sailed, provided that no class becomes more than one race ahead of schedule and the change is made according to SI 2.1.

6.3 The scheduled time of the warning signal for the first race each day is

<i>Date:</i>	Flying Dutchman	Flying Junior
Saturday 6 May	12:25	12:30
Sunday 7 May	10:55	11:00

6.4 To alert boats that a race or sequence of races will begin soon, the orange starting line flag will be displayed with one sound at least five minutes before a warning signal is made.

6.5 On the last scheduled day of racing no warning signal will be made after 15:00.



7 CLASS FLAGS

7.1 The Class flags are:

	Flying Dutchman	Flying Junior
Flag	<i>FD Class Flag</i>	<i>FJ Class Flag</i>

8 RACING AREA

8.1 Addendum A shows the location of the racing area.

9 COURSES

9.1 The diagram(s) in SI Addendum B show(s) the courses, including the approximate angles between legs, the order in which marks are to be passed, and the side on which each mark is to be left.

9.2 No later than the warning signal, the race committee vessel will display the approximate compass bearing of the first leg and the course number on a white board with roman numerals.

9.3 Legs of the course will not be changed after the preparatory signal. This changes RRS 33.

10 MARKS

10.1 Marks of the course are orange buoys. Spreader 1A will be a yellow buoy.

10.2 New marks, as provided in SI 13.1, will be orange buoys.

10.3 The starting marks will be a buoy with staff displaying an orange flag and a staff displaying an orange flag on the committee vessel with club flag WSV Hoorn

The finishing marks will be a buoy with staff displaying a blue flag and a staff displaying a blue flag on the committee vessel.

10.4 A race committee vessel signaling a change of a leg of the course is a mark as provided in SI 13.2.

11 N.A.

12 THE START

12.1 The starting line is between a staff displaying an orange flag on the committee vessel at the starboard end and a buoy with staff displaying an orange flag at the port end.

12.2 Boats for which the warning signal has not yet been given must avoid the starting area during starting procedures for other races.

12.3 A boat that does not start within 4 minutes after her starting signal will be scored Did Not Start without a hearing. This changes RRS A5.1 and A5.2.



13 CHANGE OF THE NEXT LEG OF THE COURSE

- 13.1 To change the next leg of the course, the race committee will lay a new mark or move the finishing line and remove the original mark as soon as practicable. When in a subsequent change a new mark is replaced, it will be replaced by an original mark.
- 13.2 Except at a gate, boats shall pass between the race committee vessel signalling the change of the next leg and the nearby mark, leaving the mark to port and the race committee vessel to starboard. This changes RRS 28.

14 THE FINISH

- 14.1 The finishing line will be between a staff displaying a blue flag on the committee vessel at the port end and a buoy with staff displaying a blue flag at the starboard end.

15 N.A.

16 TIME LIMITS [AND TARGET TIMES]

- 16.1 The targettime of race is 45 Minutes. The Mark 1 Time Limit, Race Time Limit (see RRS 35), and the Finishing Window are shown in the table below.

Mark 1 Time Limit	Race Time Limit	Finishing Window
20 Minutes	60 Minutes	15 Minutes

- 16.2 If no boat has passed Mark 1 within the Mark 1 time limit the race will be abandoned.
- 16.3 The Finishing Window is the time for boats to finish after the first boat sails the course and finishes. Boats failing to finish within the Finishing Window, and not subsequently retiring, penalized or given redress, will be scored Time Limit Expired (TLE) without a hearing. A boat scored TLE shall be scored points for the finishing place one more than the points scored by the last boat that finished within the Finishing Window. This changes RRS 35, A5.1, A5.2 and A10.
- 16.4 Failure to meet the target time will not be grounds for redress. This changes RRS 62.1(a).

17 HEARING REQUESTS

- 17.1 For each class, the protest time limit is 60 minutes after the last boat in that class finishes the last race of the day or the race committee signals no more racing today, whichever is later. The time will be posted on the official notice board.
- 17.2 Hearing request forms are available from the starting Vessel at the launch area -
- 17.3 Notices will be posted no later than 30 minutes after the protest time limit to inform competitors of hearings in which they are parties or named as witnesses. Hearings will be held in the protest room, located at Julianapark 1; 1621 MR in Hoorn. ; www.wsvhoorn.nl/route , beginning at the time posted in the Whatsappgroup



18 SAFETY REGULATIONS

- 18.1 [DP] A boat that retires from a race shall notify the race committee at the first reasonable opportunity.

19 REPLACEMENT OF CREW OR EQUIPMENT

- 19.1 Substitution of competitors will not be allowed without prior written approval of the race committee
Replacement of the responsible person is not allowed.

20 EQUIPMENT CHECKS AND MEASUREMENT CHECKS

- 20.1 A boat or equipment may be inspected at any time for compliance with the class rules, notice of race and sailing instructions.
20.2 [DP] When instructed by a race official on the water, a boat shall proceed to a designated area for inspection.

21 N.A.

22 OFFICIAL VESSELS

- 22.1 Official vessels will be identified as follows: white flag with "RC"

23 [DP] SUPPORT TEAMS

- 23.1 Team leaders, coaches and other support persons shall stay outside areas where boats are racing from the time of the preparatory signal for the first start until all boats have finished or retired or the race committee signals a postponement, general recall or abandonment..

24 TRASH DISPOSAL

- 24.1 Trash may be placed aboard official boats.

25 ORGANISATION

The race officer is	: Allert Mastenbroek
The chairman of the protest committee is	: Bart Koolmeijer
The chairman of the technical committee is	: Michiel Woort



ADDENDUM A





ADDENDUM B

Course I : Start – 1- 2 - 3 - Finish

Course II : Start – 1- 2 - 3 - 1 – 1A – 3- Finish (Preferred for FJ class)

Course III: Start – 1 - 2 - 3 - 1 – 1A – 3 – 1 – 1A – 3- Finish (Preferred for FD Class)





SAILING INSTRUCTIONS

Class Event for Windsurfer class

organised by **WSV Hoorn**
under the auspices of the RNWA
on 7th May 2023
location: Hoornse Hop, Hoorn

The notation '[NP]' in a rule means that a boat may not protest another boat for breaking that rule. This changes RRS 60.1(a).

1. RULES

1.1 The event is governed by the rules as defined in *The Racing Rules of Sailing (RRS)* . with reference to Appendix B "competition rules for sailboards" and IWCA Class rules (www.windsurferclass.com). Verbal rules can be added. In case of conflict between the Notice of Race and the Sailing Instructions the latter ones will prevail.

The Prescriptions of the RNWA can be found at

http://www.sailing.org/documents/racingrules/national_prescriptions.php

1.2 RRS 44.1 is changed so that the Two-Turns Penalty is replaced by the One-Turn Penalty.

PROPULSION: Rule 42 shall apply only when competitors are sailing to windward or on a close-hauled course from 30 seconds after the starting signal (changes rules 42). One long sound signal may be made to indicate 30 seconds after the starting signal.

Pumping shall be unrestricted for the slalom and marathon events.

A member of the race committee or a designated observer who sees a competitor infringing SI 13.1 may disqualify that competitor without a hearing

1.3 All competitors and support persons must adhere to the corona rules of the Dutch government for the for the rules see <https://www.government.nl/topics/coronavirus-covid-19>.

1.4 [DP] Competitors and support persons shall comply with any reasonable request from an event official. Failure to comply may be misconduct. - Reasonable actions by event officials to implement COVID-19 guidance, protocols or legislation, even if they later prove to have been unnecessary, are not improper actions or omissions.

2 CHANGES TO SAILING INSTRUCTIONS

2.1 Any change to the sailing instructions will be posted before 09:00 on the day it will take effect, except that any change to the schedule of races will be posted by 20:00 on the day before it will take effect.

2.2 Changes to a sailing instruction may be made on the water by signals on the committee vessel "Voorzitter B" .

3 COMMUNICATIONS WITH COMPETITORS



3.1 the committee will do the notices at the Whatsapp Group.
Register for the Whatsappgroup via <https://chat.whatsapp.com/B6Su4XtCzZCGU5EdJr1uGL>

3.2 The race office is located at [Julianapark 1; 1621 MR Hoorn. +31 229 213 540;](https://www.wsvhoorn.nl/route/)
www.wsvhoorn.nl/route/

3.3 Spare

3.4 Spare

3.5 Spare


4 [DP] CODE OF CONDUCT

4.1 Competitors and support persons shall comply with reasonable requests from race officials.

4.2 Competitors and support persons shall handle any equipment -or place advertising provided by the organizing authority with care, seamanship, in accordance with any instructions for its use and without interfering with its functionality.

5 SIGNALS MADE ASHORE

5.1 Signals made ashore will be displayed at a mast nearby in the front of the race office.

5.2 When flag AP  is displayed ashore, '1 minute' is replaced with 'not less than 60 minutes' in the race signal AP.

5.3 Spare

6 SCHEDULE OF RACES

6.1

Date:	All Classes
Sunday 7 May	5races

6.2 One extra race per day may be sailed, provided that no class becomes more than one race ahead of schedule and the change is made according to SI 2.1.

6.3 The scheduled time of the warning signal for the first race is

Date:	All Classes
Sunday 7 May	11:05

6.4 To alert boats that a race or sequence of races will begin soon, the orange starting line flag will be displayed with one sound at least five minutes before a warning signal is made.

6.5 On the last scheduled day of racing no warning signal will be made after 15:30.



7 CLASS FLAGS

7.1 The Class flags are:

	Windsurfer LT	Windsurfer One Desgin
Flag	<i>Windsurfer LT flg</i>	<i>Windsurfer One Desgin Flag</i>

8 RACING AREA

8.1 Addendum A shows the location of the racing area.

9 COURSES

9.1 The diagram(s) in SI Addendum B show(s) the courses, including the approximate angles between legs, the order in which marks are to be passed, and the side on which each mark is to be left.

9.2 No later than the warning signal, the race committee vessel will display the approximate compass bearing of the first leg and the course number on a white board with roman numerals.

9.3 Spare

9.4 Legs of the course will not be changed after the preparatory signal. This changes RRS 33.

10 MARKS

10.1 Marks 1,3 of the course are orange buoys. Mark 4 is a green buoy. Spreader 1A is a yellow buoy.

10.2 New marks, as provided in SI 13.1, will be the same color as the original buoy.

10.3 The starting marks will be a buoy with staff displaying an orange flag and a staff displaying an orange flag on the committee vessel with club flag WSV Hoorn

The finishing marks will be a buoy with staff displaying a blue flag and a staff displaying a blue flag on the committee vessel.

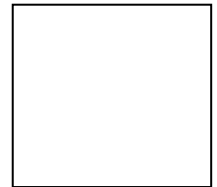
10.4 A race committee vessel signaling a change of a leg of the course is a mark as provided in SI 13.2.

11 Minimum Wind Force

The minimum wind force for a valid race is 4 knots. The raceofficer decides whether a race can be started and must be sailed

12 THE START

12.1 Spare



- 12.2 The starting line is between a staff displaying an orange flag on the committee vessel at the starboard end and a buoy with staff displaying an orange flag at the port end.
- 12.3 Boats for which the warning signal has not yet been given must avoid the starting area during starting procedures for other races.
- 12.4 **Spare**
- 12.5 A boat that does not start within 4 minutes after her starting signal will be scored Did Not Start without a hearing. This changes RRS A5.1 and A5.2.
- 12.6 Note: After the start signal, the sail may be pumped for 30 seconds, an audible signal from the starting ship indicates the end of this 30 seconds.

13 CHANGE OF THE NEXT LEG OF THE COURSE

- 13.1 To change the next leg of the course, the race committee will lay a new mark or move the finishing line and remove the original mark as soon as practicable. When in a subsequent change a new mark is replaced, it will be replaced by an original mark.
- 13.2 Except at a gate, boats shall pass between the race committee vessel signalling the change of the next leg and the nearby mark, leaving the mark to port and the race committee vessel to starboard. This changes RRS 28.

14 THE FINISH

- 14.1 The finishing line will be between a staff displaying a blue flag on the committee vessel at the port end and a buoy with staff displaying a blue flag at the starboard end.

15 PENALTY SYSTEM

- 15.1 The scoring penalty, RRS 44.3, applies. The penalty is 1 place

16 TIME LIMITS [AND TARGET TIMES]

- 16.1 The targettime of race is 30 Minutes. The Mark 1 Time Limit, Race Time Limit (see RRS 35), and the Finishing Window are shown in the table below.

Mark 1 Time Limit	Race Time Limit	Finishing Window
20 Minutes	45 Minutes	10 Minutes

- 16.2 If no boat has passed Mark 1 within the Mark 1 time limit the race will be abandoned.
- 16.3 The Finishing Window is the time for boats to finish after the first boat sails the course and finishes. Boats failing to finish within the Finishing Window, and not subsequently retiring, penalized or given redress, will be scored Time Limit Expired (TLE) without a hearing. A boat scored TLE shall be scored points for the finishing place one more than the points scored by the last boat that finished within the Finishing Window. This changes RRS 35, A5.1, A5.2 and A10.
- 16.4 Failure to meet the target time will not be grounds for redress. This changes RRS 62.1(a).

17 HEARING REQUESTS



- 17.1** For each class, the protest time limit is 60 minutes after the last boat [in that class] finishes the last race of the day or the race committee signals no more racing today, whichever is later. The time will be posted on the official notice board.
- 17.2** Hearing request forms are available from the starting Vessel at the launch area -
- 17.3** Notices will be posted no later than 30 minutes after the protest time limit to inform competitors of hearings in which they are parties or named as witnesses. Hearings will be held in the protest room, located at Julianapark 1; 1621 MR in Hoorn. ; www.wsvhoorn.nl/route_, beginning at the time posted in the Whatsappgroup

18 [NP][DP] SAFETY REGULATIONS

18.1 Spare

- 18.2 [DP]** A boat that retires from a race shall notify the race committee at the first reasonable opportunity.

19 REPLACEMENT OF CREW OR EQUIPMENT

- 19.1** Substitution of competitors will not be allowed without prior written approval of the race committee
Replacement of the responsible person is not allowed.

20 EQUIPMENT CHECKS AND MEASUREMENT CHECKS

- 20.1** A boat or equipment may be inspected at any time for compliance with the class rules, notice of race and sailing instructions.
- 20.2 [DP]** When instructed by a race official on the water, a boat shall proceed to a designated area for inspection.

21 Spare

22 OFFICIAL VESSELS

- 22.1** Official vessels will be identified as follows: white flag with "RC"

23 [DP] SUPPORT TEAMS

- 23.1** Spare.
- 23.2** Team leaders, coaches and other support persons shall stay outside areas where boats are racing from the time of the preparatory signal for the first start until all boats have finished or retired or the race committee signals a postponement, general recall or abandonment..

24 TRASH DISPOSAL

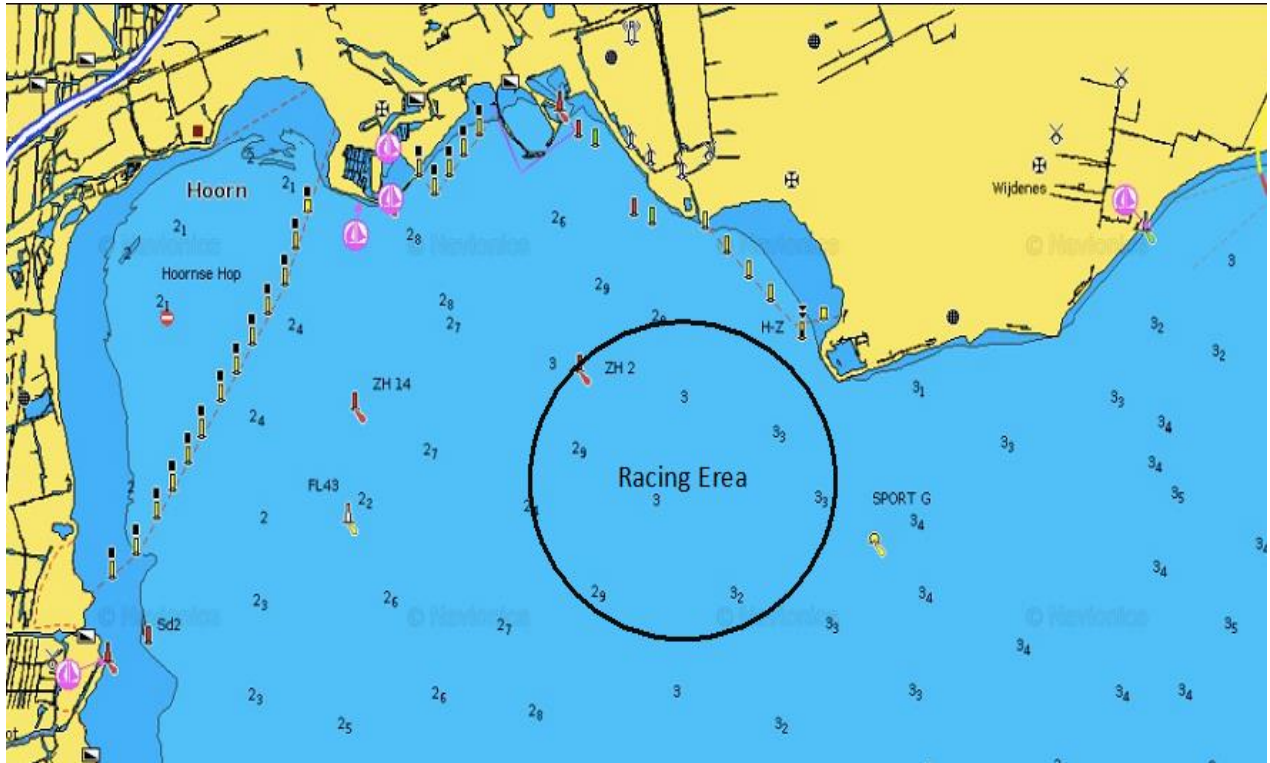
- 24.1** Trash may be placed aboard official boats.

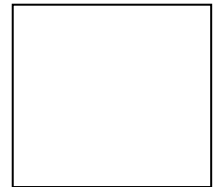
25 ORGANISATION

The race officer is : Allert Mastenbroek
The chairman of the protest committee is : Bart Koolmeijer



ADDENDUM A





ADDENDUM B

Course I : Start – 1- 4 - 3 – Finish (Preferred for Windsurfer)
Course II : Start – 1- 4 - 3 – 1 – 1A- 3 - Finish
Course III: Start – 1 - 4 - 3 -1 - 1a – 3 – 1 – 1A – 3 – Finish

